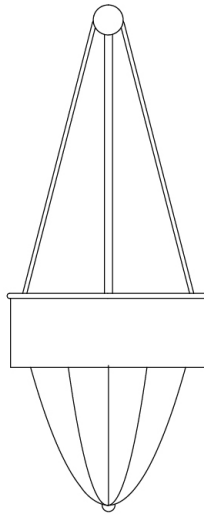


BALDASSARE WALL LAMP



HOW TO INSTALL YOUR NEW LIGHT

Please verify that all components are included before installation.

If anything is missing, please contact us at:

customer@studioebur.com
www.studioebur.com

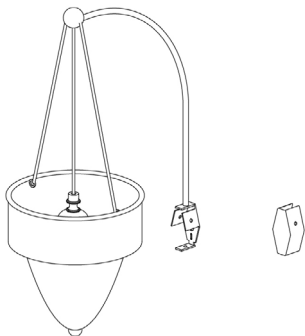
CAUTION

Risk of fire or electric shock. Turn off power at the circuit breaker before installation. Installation must be performed by a licensed electrician. Do not exceed specified wattage. Use only specified bulb type.

BALDASSARE WALL LAMP

PART A

Fixture assembly (lampshade, electrical system,
mounting plate & canopy cover)
x1



PART B

Mounting screws
x2



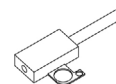
PART C

Canopy mounting screws
x1



PART D

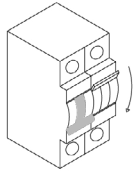
Wire connector
x1



BALDASSARE WALL LAMP

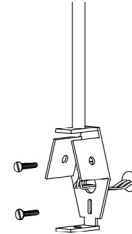
STEP 01

Turn off power at the circuit breaker before beginning installation.



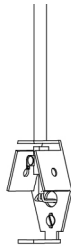
STEP 02

Attach the mounting plate to the wall using the provided screws (Part B).



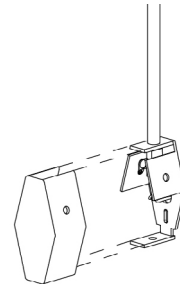
STEP 03

Connect the wires as follows. Brown or black to L (live), blue to N (neutral), green/yellow to earth (ground). Ensure all connections are secure and properly insulated.



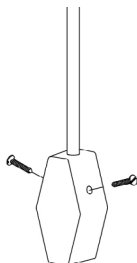
STEP 04

Fit the canopy onto the mounting plate.



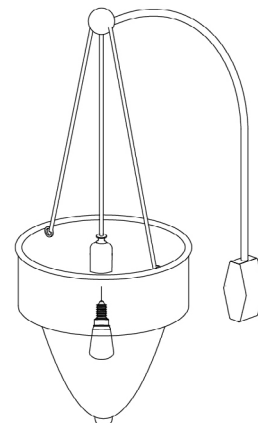
STEP 05

Secure the canopy using the provided screws (Part C)



STEP 06

Insert one E14 LED bulb (not included). Restore power at the circuit breaker and test the fixture.



BALDASSARE WALL LAMP

HOW TO CLEAN YOUR LAMP

Turn off power before cleaning. Clean with a soft, dry cloth only. Do not use water or harsh cleaning products.

GOOD TO KNOW

For dimming, use a dimmable bulb with a compatible dimmer.

SOLD SEPARATELY

Light bulb sold separately.

EBUR recommends the E14 LED light bulb (max. 10W) with a warm color temperature of up to 2700 K.

IMPORTANT NOTICE

This product complies with applicable European safety standards. Installation should be carried out by a qualified electrician.

END OF LIFE OF THE PRODUCT



This product must not be disposed of with household waste. Please dispose of it in accordance with local regulations and recycling requirements.